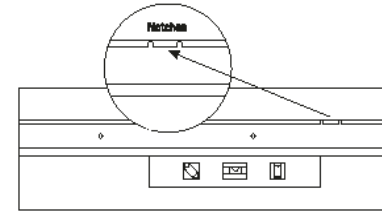


ASSEMBLY & INSTALLATION GUIDE

PLEASE READ ALL OF THE INSTRUCTIONS BEFORE BEGINNING ASSEMBLY.

Tools needed: pencil, scissors, level, power drill, drill bits, #2 Phillips head bit for power drill, #2 Phillips head screwdriver, hammer, tape measure, ladder or step stool.

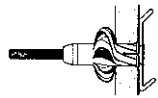


Top tracks have a top and a bottom. The TOP is designated by a label and has two notches to allow hang standards to be inserted properly.

ASSEMBLY HARDWARE FOR TOP TRACK

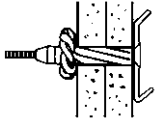


#2 Bit



Expander for single plasterboard (G5)

Used for 1/2"/3 mm or 5/8"/17 mm thick drywall. Use 3/8"/10 mm drill bit to drill hole. Insert dark blue anchor, remove and discard the gray spacer. Use #2 Phillips head bit to tighten the screw.



Expander for double plasterboard (G6)

Used for 1"/18-30 mm thick plaster or drywall. Use 3/8"/10 mm masonry drill bit to drill hole. Insert red anchor, remove and discard the gray spacer. Use #2 Phillips head bit to tighten the screw.

Screw and plug | Other Installation Hardware for Special Wall Construction

Wood

Used for mounting into drywall over wood studs or directly into wood. Use 1/8"/3 mm drill bit to drill a pilot hole the length of the bit. Discard anchor. Use #2 Phillips head bit to tighten the screw.

Concrete walls

Used for mounting into masonry walls, concrete, brick, etc. Use 5/16"/8 mm masonry drill bit to drill hole. Insert light blue anchor. Use #2 Phillips head bit to tighten the screw.



Position the top track

Place top track at desired height, mark one hole in the middle, and take the top track down. It is usually placed at ceiling or door height, but may be placed at any height.

Begin drilling the marked hole with a 1/8"/3mm drill bit. If you hit wood, continue drilling the entire length of the bit. If you hit the hollow part of the wall, enlarge the hole with a 3/8"/10mm drill bit for the hollow wall anchors.

Put the top track up with one screw and tighten it enough to hold the top track against the wall.

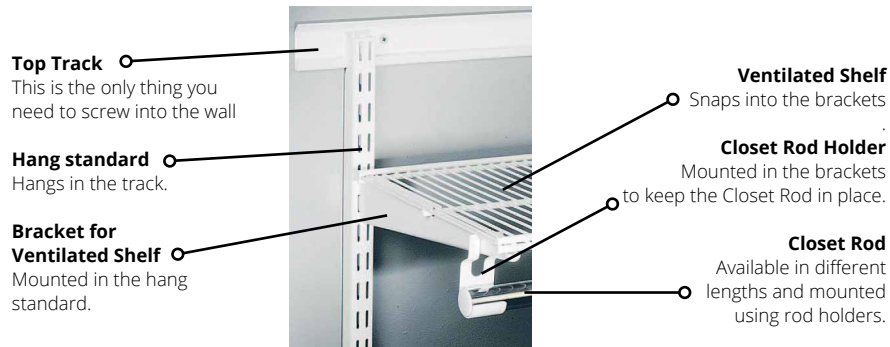
To keep the top track level while you mark all of the holes, place a level on the top of the top track and adjust it as required.

Drill all marked holes and put up the top track

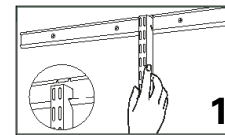
Take the top track off of the wall. Drill holes with a 1/8"/3 mm drill bit, assuming you are going into wood. If you hit wood, continue drilling the entire length of the bit. Put the top track up and insert and tighten all the screws.

If you hit the hollow part of the wall, mark those holes with an X, reminding yourself you need to go back and drill a 3/8"/10 mm hole for the hollow wall anchors.

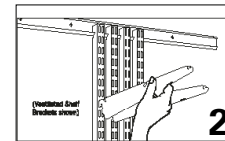
EASY HANG VENTILATED SHELVING COMPONENTS



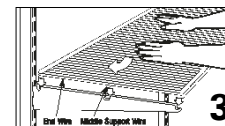
EASY HANG INSTALLATION - VENTILATED SHELVING



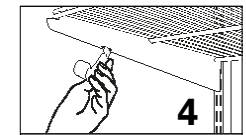
Insert the hang standards in the top track notches.



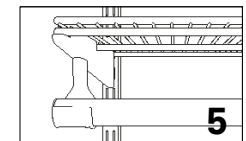
Hanging Standards should be placed at a maximum of 36"/900 mm apart in closets, 24"/600 mm apart for storage of heavy items



Place Shelf wires over notches in the Ventilated Shelf Bracket. The end of the Shelf should extend 1/2"/10 mm past the side of the Bracket. Lock the Shelf into place by pressing the middle part down and toward the wall. To unlock the Shelf, lift the back out of the slot and pull away from the wall. Snap the Closet Rods into their Holders



Insert the closet rod holder into the slot in the bottom of the bracket click in.



Snap in the closet rod Tap the end caps into both ends of the closet rod. Snap the closet rod into the closet rod holder.